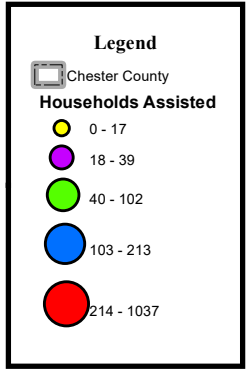
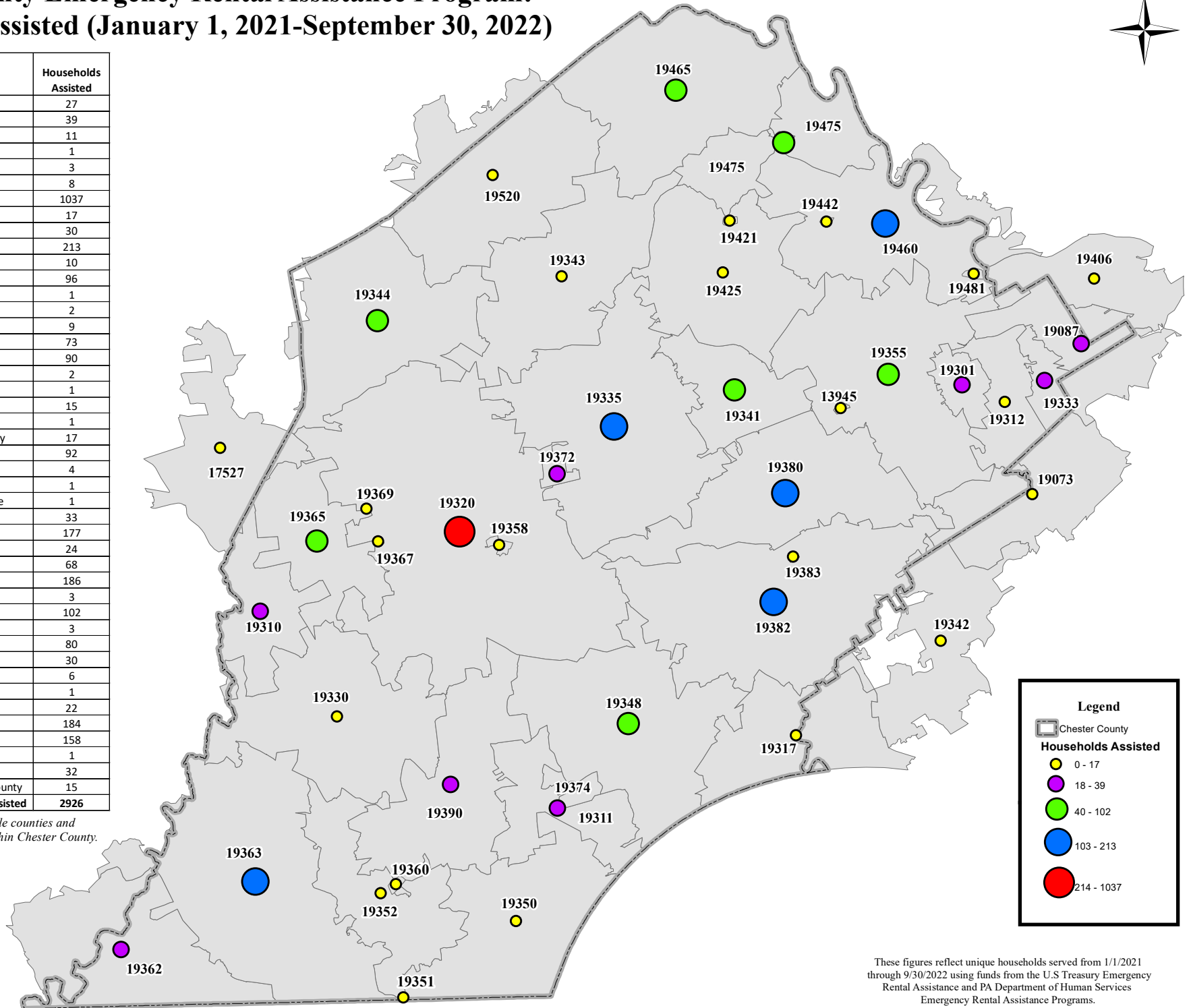


Chester County Emergency Rental Assistance Program: Households Assisted (January 1, 2021-September 30, 2022)



Zip Code	Town	Households Assisted
19310	Atglen	27
19311	Avondale	39
19312	Berwyn	11
19421	Birchrunville	1
19317	Chadds Ford	3
19425	Chester Springs	8
19320	Coatesville	1037
19330	Cochranville	17
19333	Devon	30
19335	Downingtown	213
19520	Elverson	10
19341	Exton	96
17527*	Gap	1
19342*	Glen Mills	2
19343	Glenmoore	9
19344	Honey Brook	73
19348	Kennett Square	90
19442	Kimberton	2
19406*	King of Prussia	1
19350	Landenberg	15
19351	Lewisville	1
19352	Lincoln University	17
19355	Malvern	92
19358	Modena	4
19360	New London	1
19073*	Newtown Square	1
19362	Nottingham	33
19363	Oxford	177
19301	Paoli	24
19365	Parkesburg	68
19460	Phoenixville	186
19367	Pomeroy	3
19465	Pottstown	102
19369	Sadsburyville	3
19475	Spring City	80
19372	Thorndale	30
19374	Toughkenamon	6
19481	Valley Forge	1
19087	Wayne	22
19382	West Chester	184
19380	West Chester	158
19383	West Chester	1
19390	West Grove	32
Relocation Assistance Out of County		15
Total Households Assisted		2926

* zip codes cover multiple counties and households served reside within Chester County.



These figures reflect unique households served from 1/1/2021 through 9/30/2022 using funds from the U.S Treasury Emergency Rental Assistance and PA Department of Human Services Emergency Rental Assistance Programs.
Data Source: Chester County Homeless Management Information System. ERAP-1