

**FIGURE 2
GEOLOGY**

- Geology**
- Cah - Antietam and Harpers Quartzite/Quartz Schist
 - Xo - Octoraro Schist/Gneiss
 - Cch - Chickies Quartzite
 - Ce - Elbrook Limestone
 - Ck - Kinzers Limestone
 - Cl - Ledger Dolomite
 - Cv - Vintage Dolomite
 - OCc - Conestoga Limestone
 - Trs - Stockton Sandstone
 - ggd - Felsic and Intermediate Gneiss, Amphibolite Facies
 - Fault Lines
 - Sinkholes

- Legend**
- Valley Creek Watershed Boundary
 - Geologic Formation Boundaries
 - Valley Forge National Historic Park
 - Water
 - Streams
 - County Boundary
 - Municipal Boundaries
 - Highways & State Routes
 - Local Roads
 - Railroads

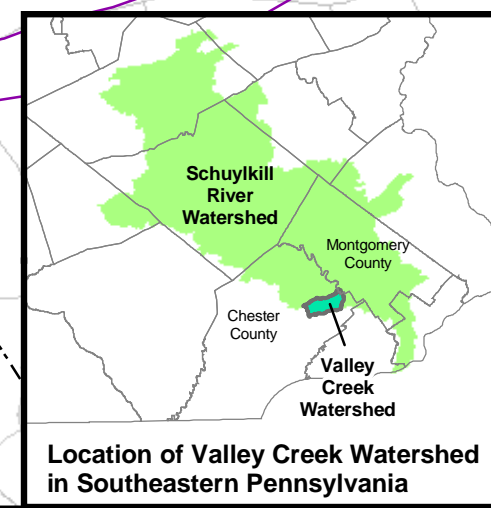
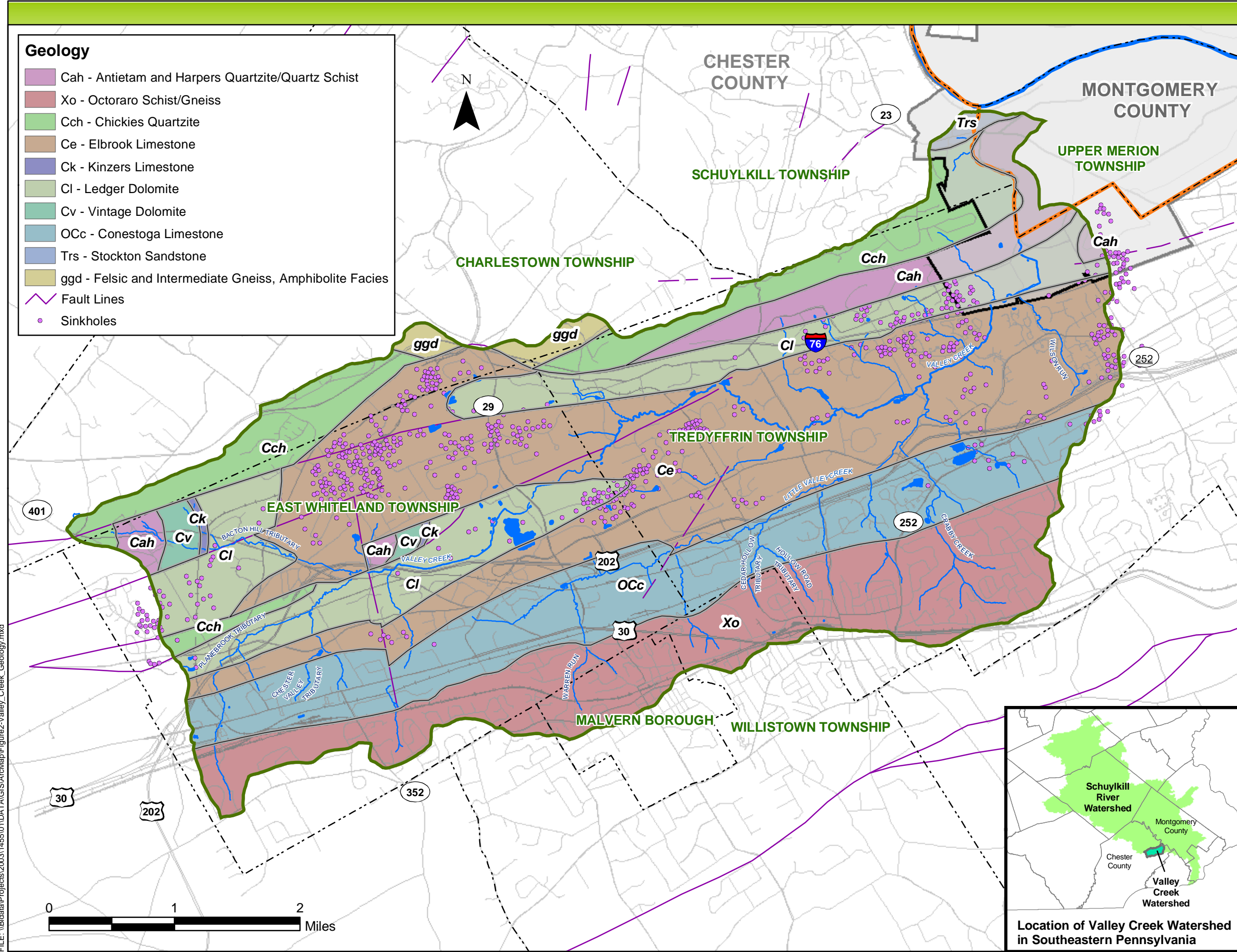
Prepared For:
County of Chester
2 N. High Street
West Chester, PA 19380-0991
and
Chester County
Water Resources Authority
601 Westtown Road, Suite 260
West Chester, PA 19380-0990
(610) 344-5400



DISCLAIMER
No part of this document may be reproduced, stored in a retrieval system or transmitted in any form of by any means, electronic, mechanical, photocopying, recording or otherwise, except as expressly permitted by the County of Chester, Pennsylvania.

This map was digitally compiled for internal maintenance and developmental use by the County of Chester, Pennsylvania for reference purposes. County of Chester, Pennsylvania makes no claims as to the completeness, accuracy or content of any data contained hereon, and makes no representation of any kind, including, but not limited to, the warranties of merchantability or fitness for a particular use, nor are any such warranties to be implied or inferred, with respect to the information or data furnished herein.

DATA SOURCES:
Roads - Chester County: Chester County Bureau of Land Records, 2004
Montgomery County: Pennsylvania Department of Transportation, 2001
Railroads - Chester County Bureau of Land Records, 2004
County Boundaries - Chester County Bureau of Land Records, 2004;
Pennsylvania Department of Transportation, 1999.
Municipal Boundaries - Chester County Bureau of Land Records, 2004;
Pennsylvania Department of Transportation, 1999.
Valley Forge Park - Chester County Water Resources Authority, 2004
Streams and Water Bodies - Chester County Water Resources Authority, 2004
Watershed Boundary - Chester County Water Resources Authority, 2004
Geology - PADEP-PA Geological Survey
Fault Lines - US Geological Survey, 1996
Sinkholes - US Geological Survey, 1996



FILE: \\Bdata\Projects\2003\145501\DATA\GIS\ArcMap\Figure2-Valley_Creek_Geology.mxd

**Borton
Lawson
ENGINEERING**

6814 Chrisphalt Drive, Suite 200 Bath, PA 18014-8503

PREPARED BY: JLG	CHECKED BY:
PROJECT NUMBER: 2003-1455-01	DATE: 6/22/2004