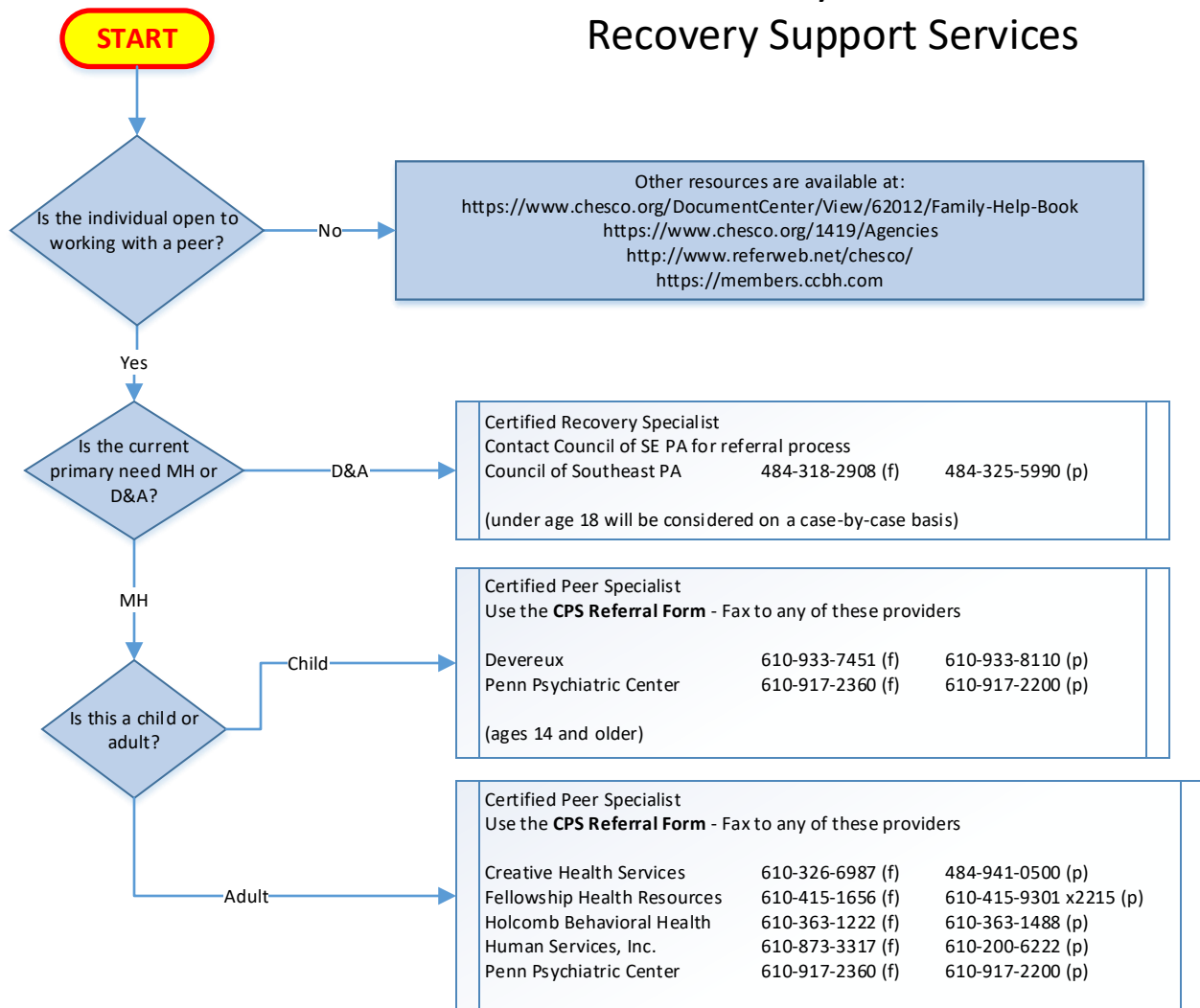


# Chester County Certified Peer/ Recovery Support Services

**NOTE:** Peer services are **VOLUNTARY**, the individual must be open to working with a peer.



Check <http://www.referweb.net/chesco/> for additional resources in Chester County.

PLEASE NOTE: This information could change. Updated versions are available at <https://pa-chestercounty2.civicplus.com/DocumentCenter/View/66135/Peer-Services-0122>