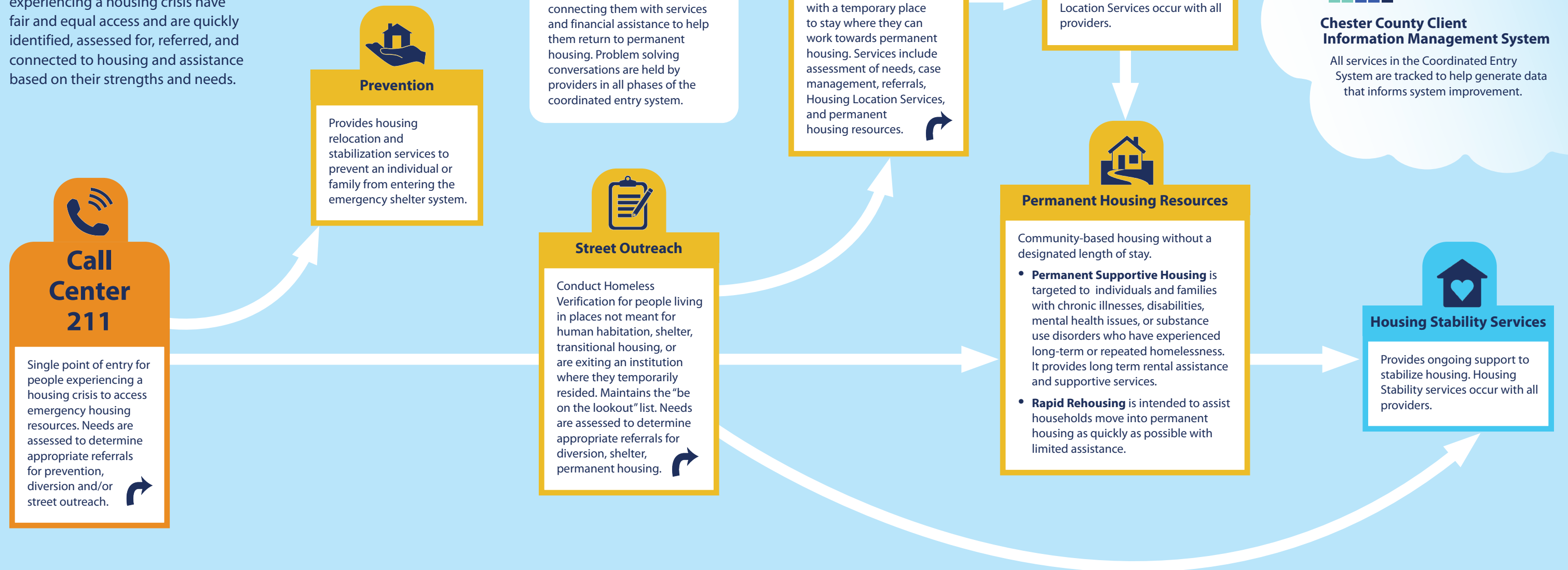


Decade to Doorways Coordinated Entry System

Coordinated entry is a process developed to ensure that all people experiencing a housing crisis have fair and equal access and are quickly identified, assessed for, referred, and connected to housing and assistance based on their strengths and needs.



Partners

- 

Call Center 211

 - United Way of Chester County
- 

Diversion

 - Human Services Inc.
 - United Way of Chester County
- 

Prevention

 - Act in Faith of Greater West Chester
 - Friends Association
 - Human Services Inc.
 - Kennett Area Community Service
 - North Star of Chester County
 - Open Hearth Inc.
 - Oxford Area Neighborhood Services Center
 - Pennsylvania Home of the Sparrow
- 

Street Outreach

 - Chester County Department of Community Development
- 

Emergency Shelters

 - Community, Youth and Women's Alliance
 - Domestic Violence Center of Chester County
 - Friends Association
 - Good Samaritan Services
 - Open Hearth Inc.
 - Safe Harbor of Chester County
 - W.C. Atkinson Memorial Community Services Center
- 

Housing Location Services

 - Housing Authority of Chester County
 - Human Services Inc.
 - North Star of Chester County
 - Open Hearth Inc.
 - Oxford Area Neighborhood Services Center
 - Pennsylvania Home of the Sparrow
- 

Permanent Housing Resources

 - Housing Authority of Chester County
 - Human Services Inc.
 - Open Hearth Inc.
- 

Housing Stability Services

 - Act in Faith of Greater West Chester
 - Friends Association
 - Handi-Crafters Inc.
 - Housing Authority of Chester County
 - Human Services Inc.
 - Kennett Area Community Service
 - North Star of Chester County
 - Open Hearth Inc.
 - Oxford Area Neighborhood Services Center
 - Pennsylvania Home of the Sparrow