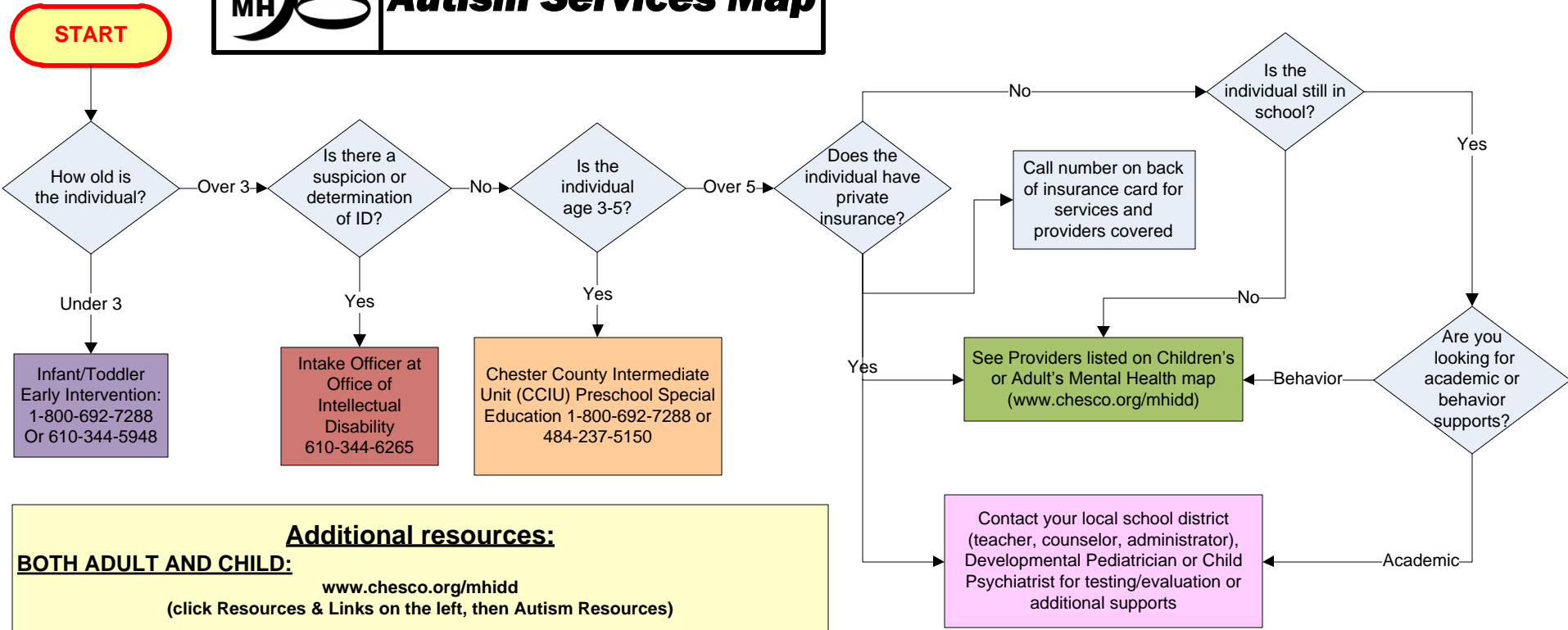




Chester County Autism Services Map



Additional resources:

BOTH ADULT AND CHILD:

www.chesco.org/mhidd
(click Resources & Links on the left, then Autism Resources)

Community Care Autism Support Line: 1-866-415-1708

<http://www.asaphilly.org>

<http://ascendgroup.org>

<http://paautism.org>

ADULT:

Bureau of Autism: 1-866-539-7689 or
<http://www.dpw.state.pa.us/foradults/autismservices>

Office of Vocational Rehabilitation (OVR): 484-250-4340 or
http://www.dli.state.pa.us/portal/server.pt/community/vocational_rehabilitation

<http://www.autismspeaks.org/family-services/resource-library/adults-autism>

<http://www.nami.org/Template.cfm?Section=Helpline1&Template=/ContentManagement/ContentDisplay.cfm&ContentID=66015>

Check <http://www.referweb.net/chesco/> for additional resources in Chester County.

PLEASE NOTE: This information could change. Current version is available on www.chesco.org/mhidd.