

Land Use / Landcover Classification Class I

Planning Commission Map Series

The Anderson LU/LC Classification System is best described as Land use and land cover data (LU/LC) collected by the USGS, which, in turn is useful for environmental assessment of land use patterns with respect to water quality analysis, growth management, and other types of environmental impact assessment.








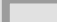
LEGEND

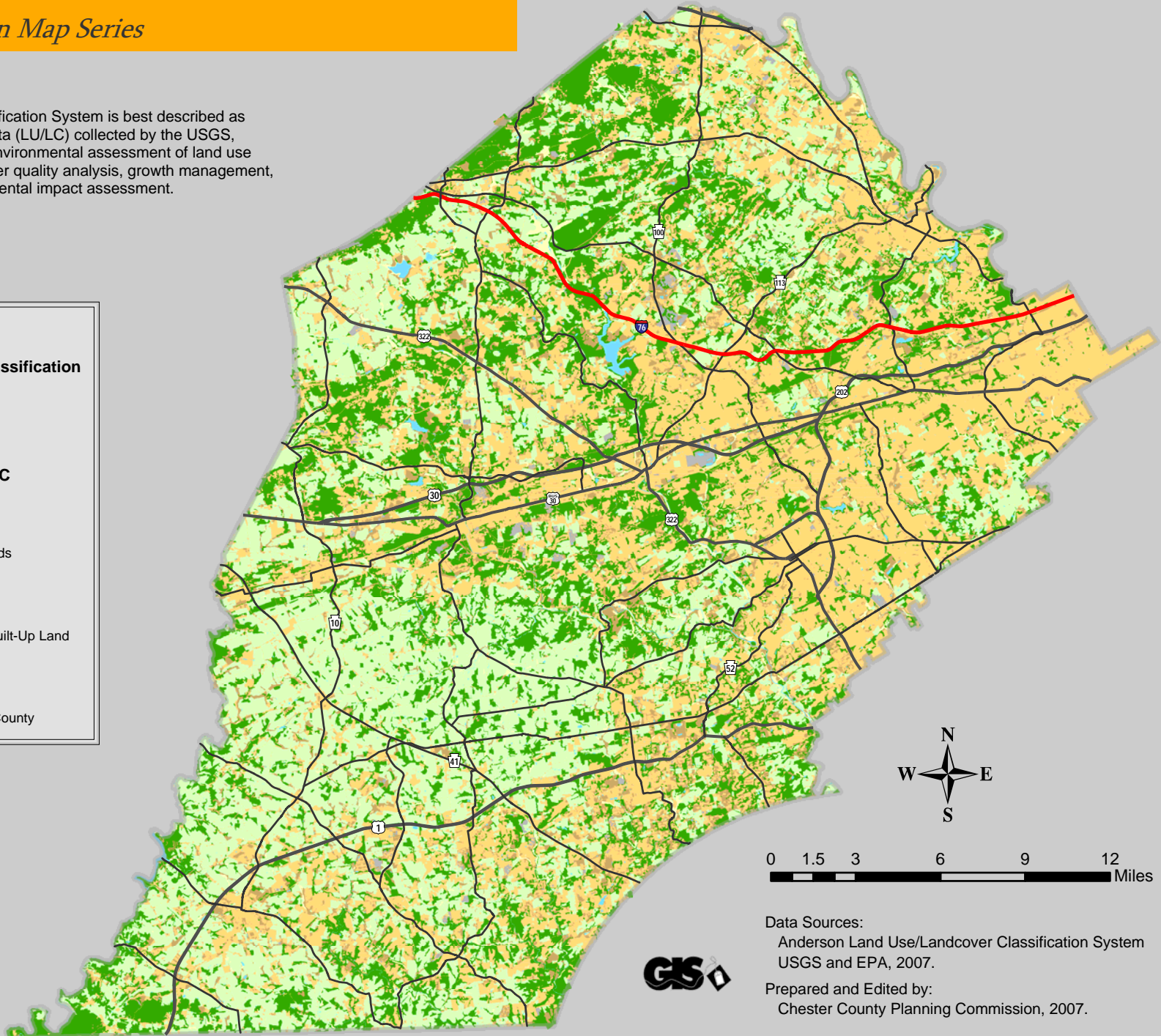
Major Road Classification

-  Interstate
-  US
-  PA

Anderson LU/LC

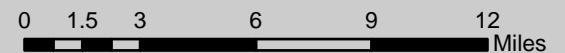
Class I

-  Agriculture
-  Barren Lands
-  Forestland
-  Rangeland
-  Urban or Built-Up Land
-  Water
-  Wetlands
-  Outline of County



This map was digitally compiled for internal maintenance and developmental use by the County of Chester, Pennsylvania to provide an index to parcels and for other reference purposes. Parcel lines do not represent actual field surveys.

No part of this document may be reproduced, stored in a retrieval system or transmitted, in any form or by any means, electronic, mechanical, photocopying, recording or otherwise, except as expressly permitted by the County of Chester, Pennsylvania.



Data Sources:

Anderson Land Use/Landcover Classification System
USGS and EPA, 2007.

Prepared and Edited by:

Chester County Planning Commission, 2007.