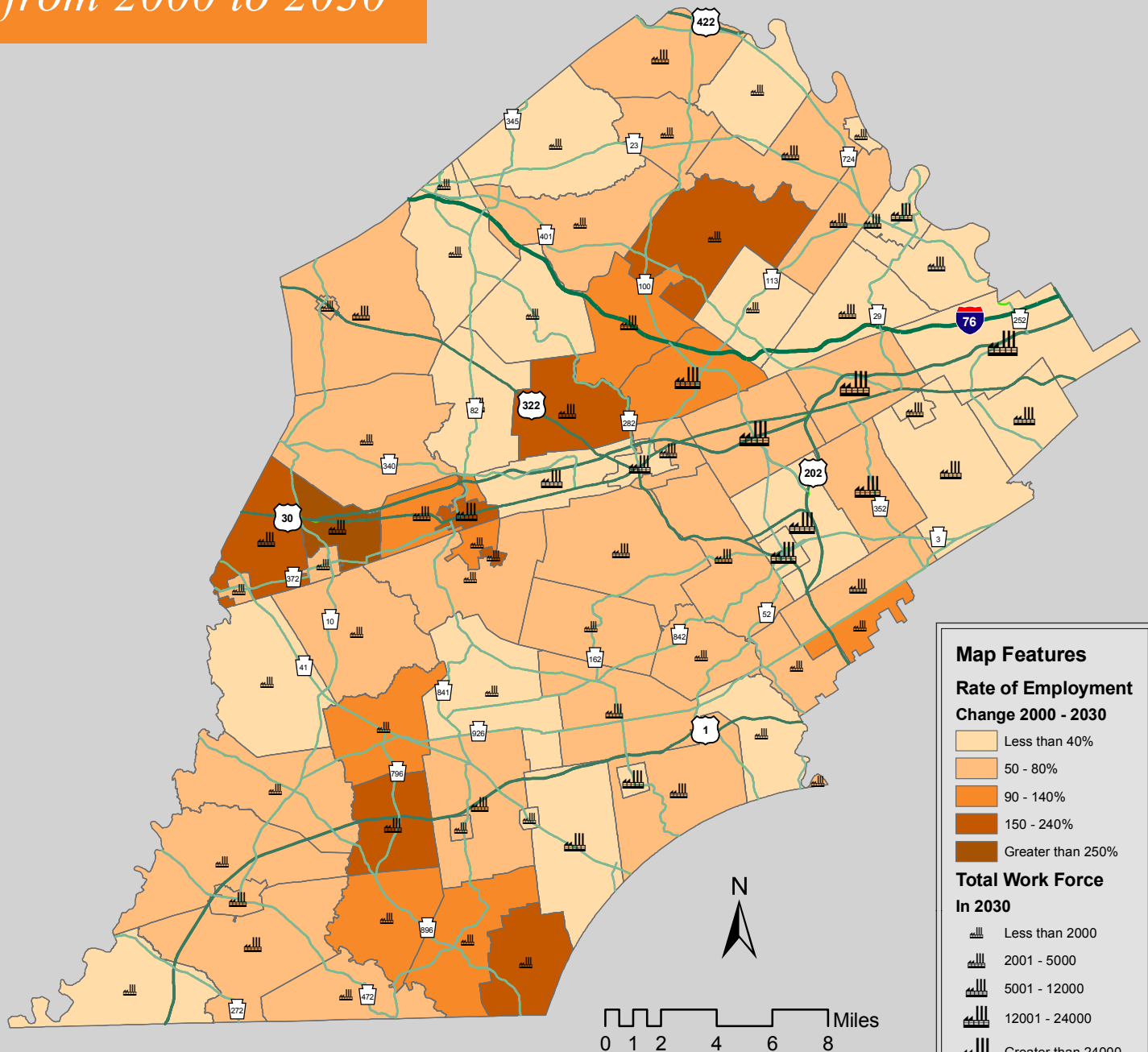


Employment Change from 2000 to 2030

OBJECTID	Name	Percent Change	2000	2030
1	Atglen	71	531	
2	Avondale	42	1187	
3	Birmingham	50	619	
4	Caln	27	6927	
5	Charlestown	40	2109	
6	Coatesville City	155	2310	
7	Downingtown	18	7104	
8	East Bradford	50	1435	
9	East Brandywine	210	676	
10	East Caln	55	2756	
11	East Coventry	23	724	
12	East Fallowfield	64	570	
13	East Goshen	66	7480	
14	East Marlborough	55	2643	
15	East Nantmeal	58	334	
16	East Nottingham	46	1533	
17	East Pikeland	63	1542	
18	Easttown	10	5251	
19	East Vincent	63	1467	
20	East Whiteland	50	23800	
21	Elk	64	106	
22	Elverson	39	1436	
23	Franklin	145	347	
24	Highland	64	320	
25	Honey Brook Twp	75	462	
26	Honey Brook	61	1786	
27	Kennett	71	2438	
28	Kennett Square	16	4933	
29	London Britain	164	236	
30	Londonderry	108	268	
31	London Grove	60	1612	
32	Lower Oxford	62	1128	
33	Malvem	39	2825	
34	Modena	238	131	
35	New Garden	42	4571	
36	Newlin	53	169	
37	New London	135	555	
38	North Coventry	62	2152	
39	Oxford	45	2197	
40	Parkesburg	72	927	
41	Penn	177	1101	
42	Pennsbury	31	692	
43	Phoenixville	41	4773	
44	Pocopson	61	1154	
45	Sadsbury	481	437	
46	Schuylkill	14	2531	
47	South Coatesville	119	907	
48	South Coventry	71	683	
49	Spring City	44	1032	
50	Thornbury	126	669	
51	Tredyffrin	22	36522	
52	Upper Oxford	53	281	
53	Upper Uwchlan	122	1993	
54	Uwchlan	91	9206	
55	Valley	113	1779	
56	Wallace	31	589	
57	Warwick	26	481	
58	West Bradford	54	1565	
59	West Brandywine	26	2419	
60	West Caln	79	710	
61	West Chester	10	14063	
62	West Fallowfield	20	808	
63	West Goshen	25	18802	
64	West Grove	55	1111	
65	West Marlborough	10	290	
66	West Nantmeal	31	405	
67	West Nottingham	42	773	
68	West Pikeland	42	803	
69	West Sadsbury	177	847	
70	Westtown	49	3115	
71	West Vincent	205	506	
72	West Whiteland	50	20173	
73	Willistown	20	7822	



Map Features

Rate of Employment Change 2000 - 2030

- Less than 40%
- 50 - 80%
- 90 - 140%
- 150 - 240%
- Greater than 250%

Total Work Force In 2030

- Less than 2000
- 2001 - 5000
- 5001 - 12000
- 12001 - 24000
- Greater than 24000

Major Roads

- PA Route
- US Route
- Interstate

Data Sources:
 Employment Forecasts 2000-2030
 Regional Data Bulletins #73
 Delaware Valley Regional Planning Commission, 2005

Prepared by:
 Chester County Planning Commission, 2006.



This map was digitally compiled for internal maintenance and developmental use by the County of Chester, Pennsylvania to provide an index to parcels and for other reference purposes. Parcel lines do not represent actual field surveys.

No part of this document may be reproduced, stored in a retrieval system or transmitted in any form or by any means, electronic, mechanical, photocopying, recording or otherwise, except as expressly permitted by the County of Chester, Pennsylvania.