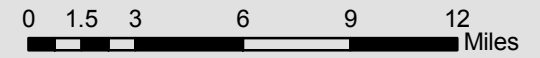
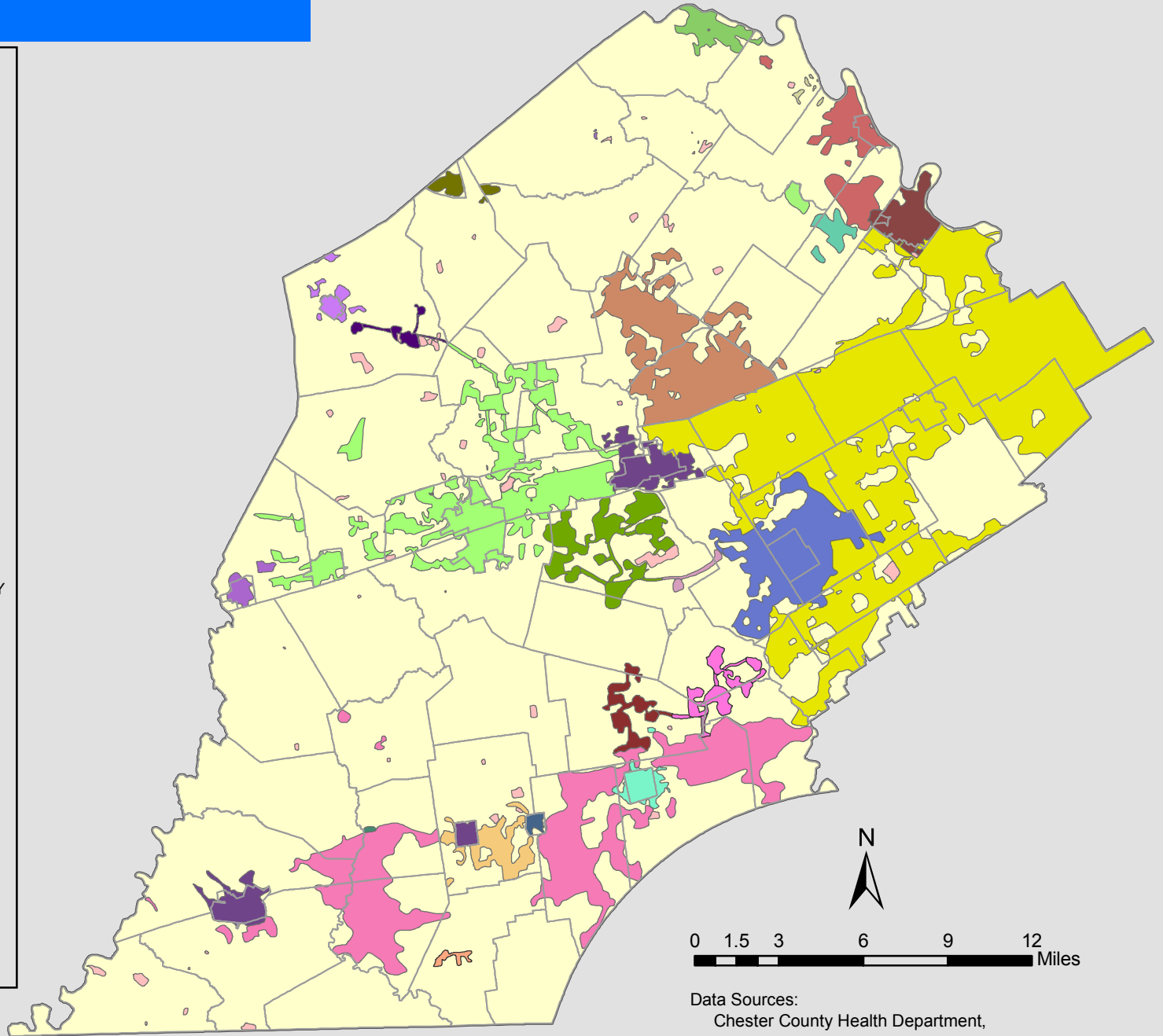


Community Water Supply System

Planning Commission Map Series

Areas of Existing Water Service

- Other Water Suppliers
- AQUA PA BEVERSDREDE
- AQUA PA FRANKLIN
- AQUA PA FRIENDSHIP
- AQUA PA HONEYBROOK
- AQUA PA MAIN SYSTEM
- AQUA PA MANORWOOD
- AQUA PA SPRING RUN
- AQUA PA UWCHLAN
- AQUA PA WEST CHESTER
- AQUA PA WILLOWDALE
- BOROUGH OF ATGLEN
- BOROUGH OF AVONDALE
- CAMPHILL VILLAGE USA INC
- CHESTER WATER AUTHORITY
- DOWNINGTOWN WATER AUTHORITY
- ELVERSON WATER COMPANY
- HONEY BROOK BOROUGH WATER AUTHORITY
- KENNETT SQUARE MUN WATER WORKS
- LONDON GROVE TWP MUN AUTHORITY
- NORTH COVENTRY WATER SYSTEM
- OXFORD BOROUGH
- OXFORD VILLAGE MOBILE HOME PARK
- PA AMERICAN COATESVILLE
- PA AMERICAN MERLIN HILLS
- PA AMERICAN PHOENIXVILLE
- PA AMERICAN WATER COMPANY
- PHOENIXVILLE WATER DEPT
- VALLEY SPRINGS WATER CO.
- WARWICK WATER WORKS
- WEST GROVE BOROUGH



Data Sources:
 Chester County Health Department,
 Chester County Planning Commission,
 Chester County Water Resource Authority, 2008

Prepared by:
 Chester County Planning Commission, 2010.



This map was digitally compiled for internal maintenance and developmental use by the County of Chester, Pennsylvania to provide an index to parcels and for other reference purposes. Parcel lines do not represent actual field surveys.

No part of this document may be reproduced, stored in a retrieval system or transmitted in any form or by any means, electronic, mechanical, photocopying, recording or otherwise, except as expressly permitted by the County of Chester, Pennsylvania.