

Geologic Formations

Chester County Planning Commission Map Series

Rock Formation

CZah	Antietam and Harpers Formations, undivided
Trb	Brunswick Group
Tbm	Bryn Mawr Formation
Zch	Chickies Quartzite
ck	Cockeysville Marble
OCc	Conestoga Limestone
Ce	Elbrook Limestone
Trh	Hammer Creek Formation
CK	Kinzers Limestone
Cl	Ledger Dolomite
Trl	Lockatong Formation
oct	Octoraro Phyllite
Tpb	Pensauken and Bridgeton Formations, undivided
ps	Peters Creek Schist
st	Setters Quartzite
Trs	Stockton Formation
Cv	Vintage Dolomite
wb	Wissahickon Schist
Yhan	anorthosite suite
Yhma	banded mafic gneiss, amphibolite facies
Jrd	diabase
Yhfg	felsic and intermediate gneiss, granulite facies
Yhfa	felsic gneiss, amphibolite facies
Yhfg	felsic gneiss, granulite facies
Ymfa	felsic to mafic gneiss
Yhga	graphitic felsic gneiss, amphibolite facies
Yhgg	graphitic felsic gneiss, granulite facies
ma	mafic gneiss, amphibolite facies
Yhmg	mafic gneiss, granulite facies
md	metadiabase
mgb	metagabbro
Cgb	metagabbro and gabbro
pg	pegmatite
Csp	serpentinized ultramafite
um	ultramafite
Yhia	felsic and intermediate gneiss, amphibolite facies
Yhfa	felsic and intermediate gneiss, amphibolite facies
Yhma	mafic gneiss, amphibolite facies

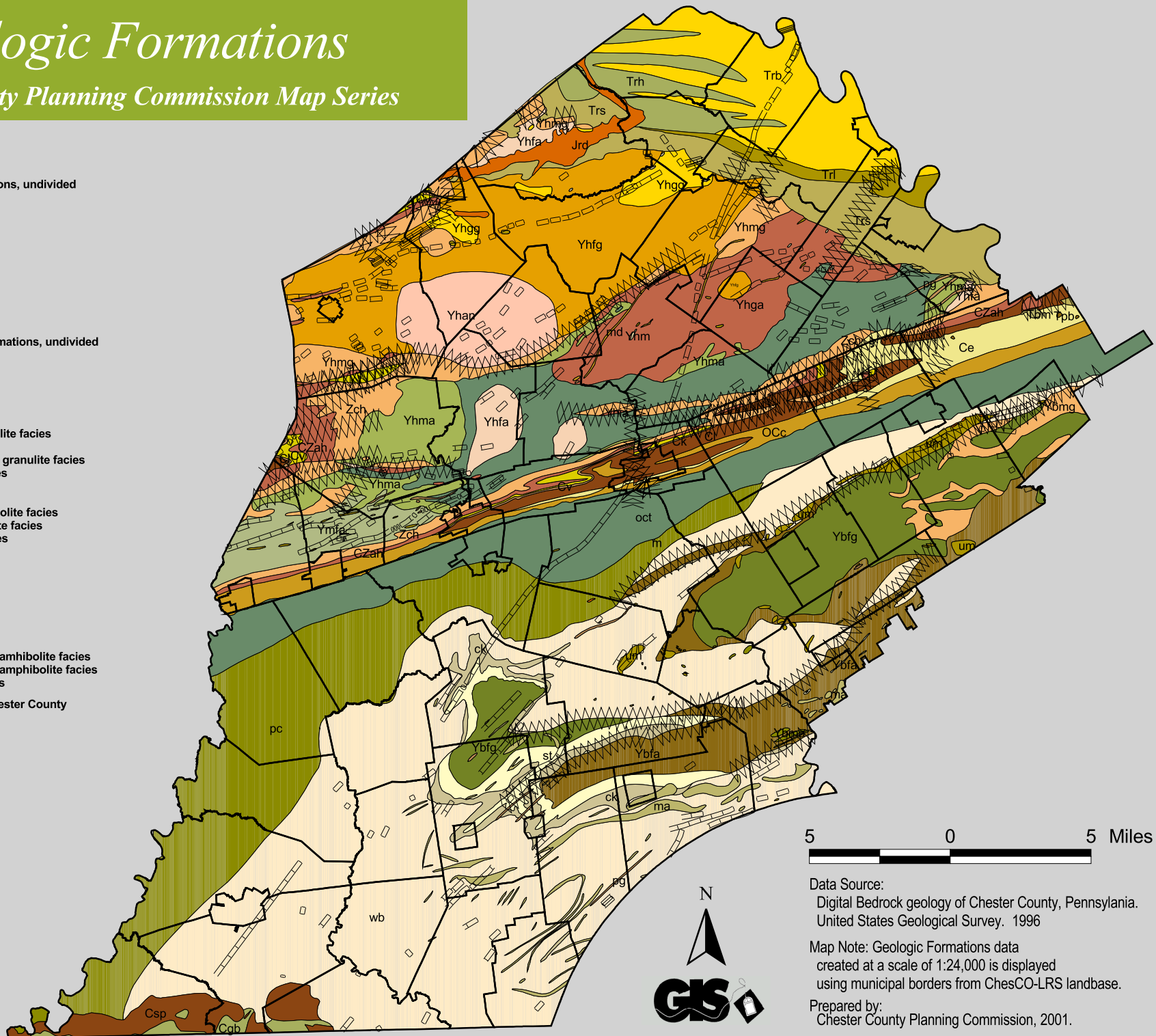
 Borders of Municipalities in Chester County

 Dikelines

 Fault lines

This map was digitally compiled for internal maintenance and developmental use by the County of Chester, Pennsylvania to provide an index to parcels and for other reference purposes. Parcel lines do not represent actual field surveys of premises. County of Chester, Pennsylvania makes no claims as to the completeness, accuracy or content of any data contained herein, and makes no representation of any kind, including, but not limited to, the warranties of merchantability or fitness for a particular use, nor are any such warranties to be implied or inferred, with respect to the information or data furnished herein.

No part of this document may be reproduced, stored in a retrieval system or transmitted in any form or by any means, electronic, mechanical, photocopying, recording or otherwise, except as expressly permitted by the County of Chester, Pennsylvania.



Data Source:
Digital Bedrock geology of Chester County, Pennsylvania.
United States Geological Survey. 1996

Map Note: Geologic Formations data
created at a scale of 1:24,000 is displayed
using municipal borders from ChesCO-LRS landbase.

Prepared by:
Chester County Planning Commission, 2001.

